

7918

BY P&O GLOBAL TECHNOLOGIES



MIAMI'S
ONE OF A KIND



A modern high-rise apartment building with a white facade and balconies, situated on the left side of the image. The building's windows and balconies are illuminated from within, creating a warm glow. The building overlooks a large body of water, Biscayne Bay, which is filled with several boats and yachts. In the background, the Miami skyline is visible, with various skyscrapers and buildings lit up against the twilight sky. The overall scene is a mix of urban architecture and natural beauty, capturing a serene moment at dusk.

HOME ABOVE IT ALL

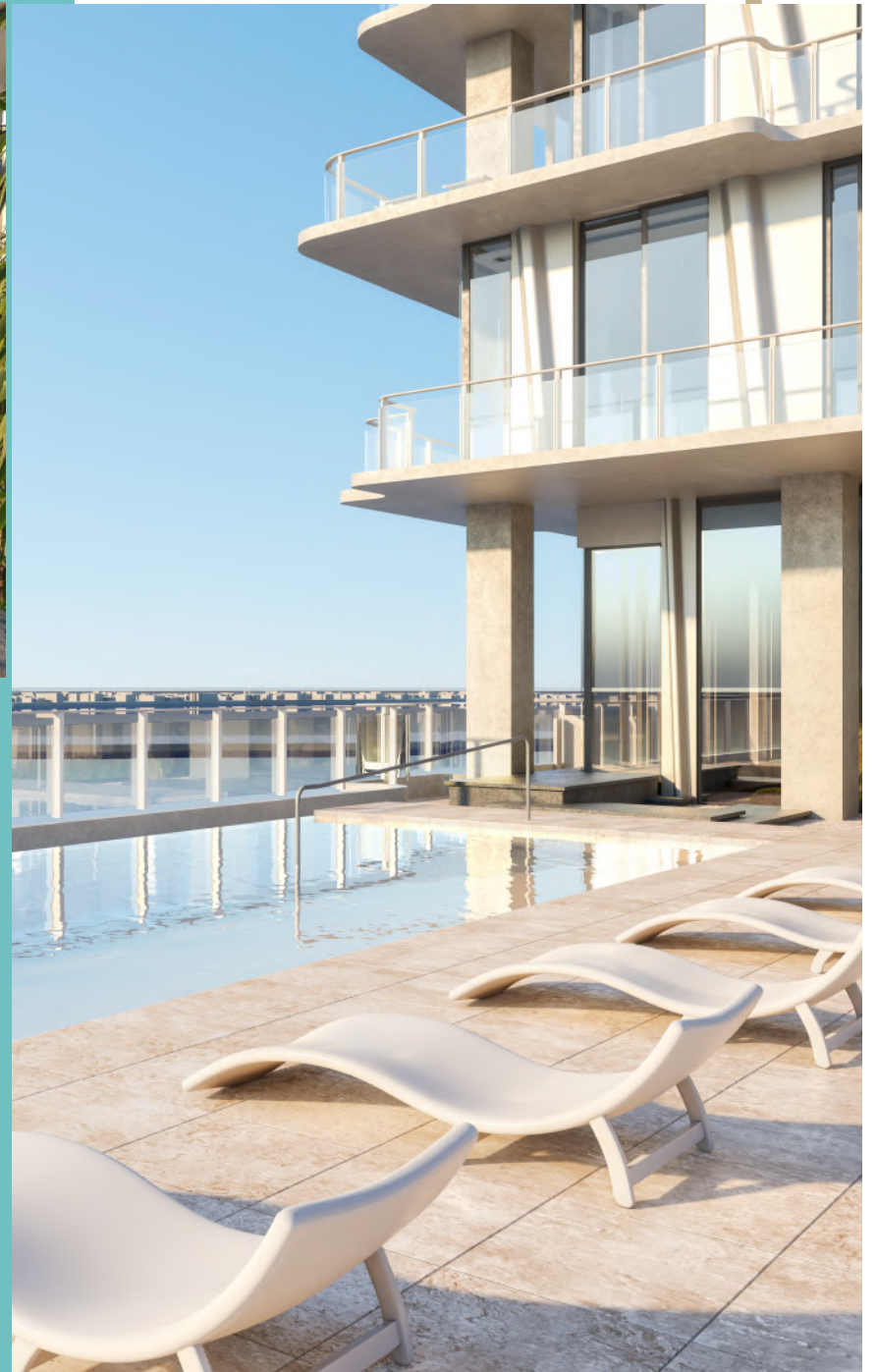
A lifestyle above it all: once you rise into the privacy and tranquility of your home, the play of views and balcony against the Biscayne Bay waterscape will make you never want to leave your world.



THE ARCHITECTURE OF SUN & SHADE

This building's exterior envelope is unlike any other. The play of the balcony outlines in combination with each unique glass line creates deep areas in balconies that are ideal to set up exterior lounge spaces. Thus every unit is a true one of a kind, dened by its own spectacle of shadow and light and individually lived by you.







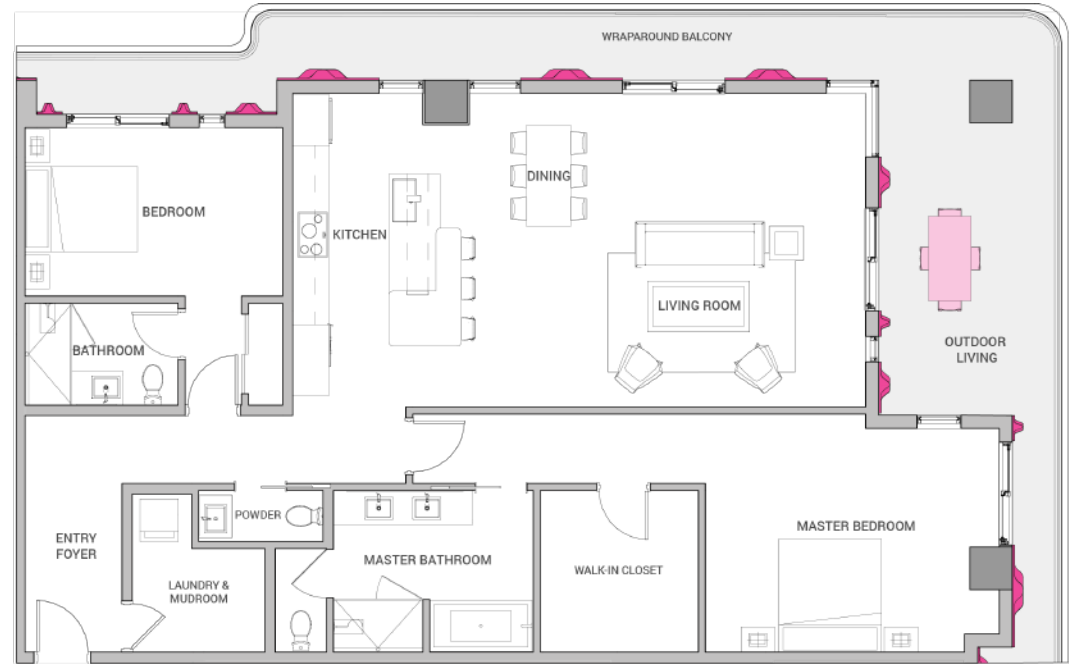
THESE DRAWINGS ARE CONCEPTUAL ONLY AND ARE FOR THE CONVENIENCE OF REFERENCE. THEY SHOULD NOT BE RELIED UPON AS REPRESENTATIONS, EXPRESS OR IMPLIED, OF THE FINAL DETAIL OF THE RESIDENCES. UNITS SHOWN ARE EXAMPLES OF UNIT TYPES AND MAY NOT DEPICT ACTUAL UNITS. STATED SQUARE FOOTAGES ARE RANGES FOR A PARTICULAR UNIT TYPE MEASURED TO THE EXTERIOR BOUNDARIES OF THE EXTERIOR WALLS AND THE CENTERLINE OF INTERIOR WALLS AND IN FACT VARY FROM THE AREA THAT WOULD BE DETERMINED BY USING THE DESCRIPTION AND DEFINITION OF THE "UNIT" SET FORTH IN THE DECLARATION (WHICH GENERALLY ONLY INCLUDES THE INTERIOR AIRSPACE BETWEEN THE PERIMETER WALLS AND EXCLUDES INTERIOR STRUCTURAL COMPONENTS). THE DEVELOPER EXPRESSLY RESERVES THE RIGHT TO MAKE MODIFICATIONS, REVISIONS, AND CHANGES IT DEEMS DESIRABLE IN ITS SOLE AND ABSOLUTE DISCRETION AND WITHOUT NOTICE.





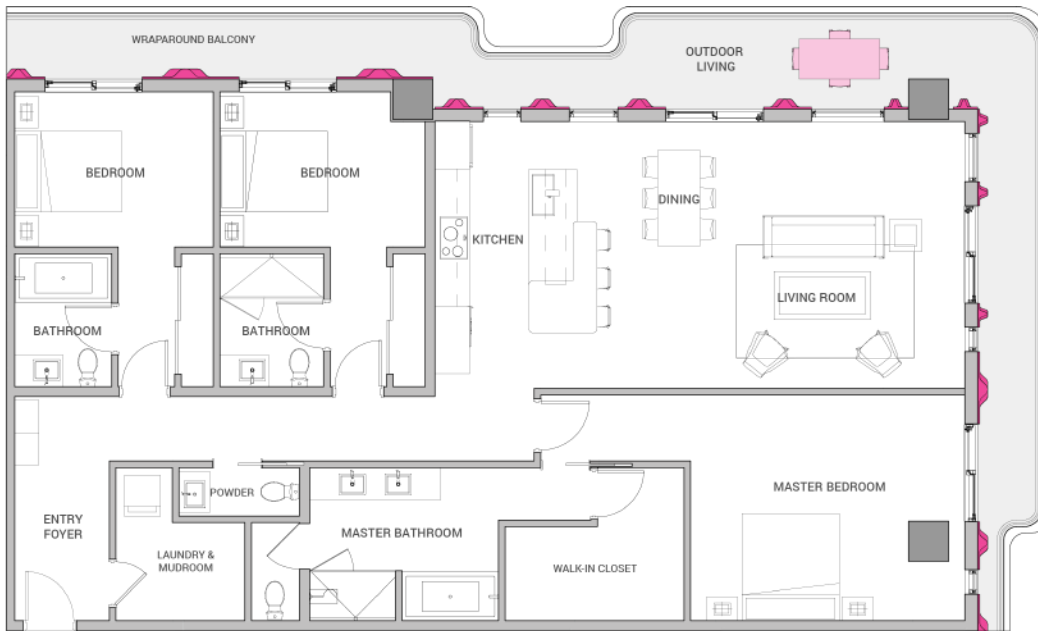
2 BEDROOM

A one-of-a-kind on the 10th floor, has a continuous wraparound balcony with sweeping views facing West and North, from Biscayne Bay to the Atlantic Ocean. Its signature Outdoor Living space faces the turquoise North Biscayne Bay. The unit is a true 2-bed, 2.5-bath, with an contemporary integrated living-entertaining cooking area with a powder room, a walk-in closet for the master bedroom and an entry foyer with a mudroom. The unit also features a state of the art German Siematic Kitchen with Cosentino countertops, Miele appliances and Hansgrohe and Kohler plumbing fixtures; in addition with features from P&O's technology services portfolio



UNIT 1002
2B-25B





3 BEDROOM

A one-of-a-kind on the 15th floor, has a continuous wraparound balcony with sweeping views facing West and North, from Biscayne Bay to the Atlantic Ocean. Its signature Outdoor Living space faces the Biscayne Bay sunset. The unit is almost a two thousand square foot 3-bed, 3.5-bath, with an contemporary integrated living-entertaining cooking area with a powder room, a walk-in closet for the master bedroom and an entry foyer with a mudroom. The unit also features a state of the art German Siematic Kitchen with Cosentino countertops, Miele appliances and Hansgrohe and Kohler plumbing fixtures; in addition with features from P&O's technology services portfolio.

UNIT 1502

3B-3.5B



RESIDENCE

5 Bedrooms

5.5 Bathrooms w/Service Quarters

3,661 SF

Balcony 1,232 SF

Two Corner Orientations: N, NE & NW

Views: North, East and West



UNIT 2002
RESIDENCE
5B-5.5B + SERVICE





